

## Breaking Gender Stereotypes in *Enola Holmes 2* (2022)

Nathania Amany Putri Jayastu

English Literature Study Program, Faculty of Languages and Arts, Universitas Negeri Surabaya

e-mail: [nathania.19069@mhs.unesa.ac.id](mailto:nathania.19069@mhs.unesa.ac.id)

### Abstrak

Saat ini, salah satu isu yang sering diangkat dalam karya sastra adalah isu feminisme dan gender. Perempuan sering kali didiskriminasi di masyarakat karena stereotip negatif. Isu ini banyak terwakili dalam karya sastra. Salah satu karya sastra yang menggambarkan feminisme dan stereotip gender adalah *Enola Holmes 2* (2022). *Enola Holmes 2* (2022) merupakan film yang menceritakan perjuangan Enola Holmes dan perempuan lain di Era Victoria menghadapi berbagai stereotip gender di masyarakat. Penelitian ini dilakukan dengan tujuan untuk menganalisis penggambaran stereotip gender dalam *Enola Holmes 2* (2022) dan bagaimana karakter perempuan dalam *Enola Holmes 2* (2022) mematahkan stereotip gender. Untuk menganalisis film, peneliti menggunakan Teori Gender dan Feminisme Butler (1999) dengan mengeksplorasi stereotip gender dan feminisme dalam masyarakat. Analisis mengungkapkan bahwa *Enola Holmes 2* (2022) menggambarkan beberapa stereotip gender: perempuan dipandang sebagai manusia lemah oleh masyarakat, perempuan sebagai sosok feminin, perempuan sebagai manusia penurut, dan perempuan sebagai manusia emosional. Selain itu, untuk mematahkan stereotip gender ada beberapa tindakan yang dilakukan oleh tokoh perempuan dalam *Enola Holmes 2* (2022) yang diusahakan setara, memulai gerakan feminisme untuk meningkatkan kesadaran masyarakat bahwa perempuan harus memiliki hak asasi manusia yang setara, berjuang bersama-sama. Sekutu sebagai support system, dan melakukan pemberontakan untuk menunjukkan bahwa perempuan sebagai manusia mempunyai kekuatan yang besar.

**Kata Kunci:** *Stereotip Gender; Feminisme; Judith Butler; Peran Gender*

### Abstract

These days, one of the issues that is often raised in literature works is about feminism and gender issues. Women has been frequently discriminated against in the society due to the negative stereotypes. This issue is widely represented in literary works. One piece of literature that portrays feminism and gender stereotypes is *Enola Holmes 2* (2022). *Enola Holmes 2* (2022) is a film that tells about the struggle of Enola Holmes and other women in the Victorian Era to face various gender stereotypes in society. This research is done with the aim to analyze the depiction of gender stereotypes in *Enola Holmes 2* (2022) and how female characters in *Enola Holmes 2* (2022) break gender stereotypes. To analyze the film, the researcher used Gender and Feminism Theory by Butler (1999) by exploring gender stereotypes and feminism in society. The analysis reveals that *Enola Holmes 2* (2022) depicted several gender stereotypes: women seen as weak human beings by society, women as feminine figures, women as submissive human beings, and women as emotional human beings. Moreover, to break the gender stereotype there are several actions that is done by the female characters in *Enola Holmes 2* (2022) which is tried to become equal, starting feminism movement to raise public awareness that women should have equal human right, fighting together with ally as support system, and doing rebellion to show that women as a great power as a human being.

**Keywords:** *Gender Stereotypes; Feminism; Judith Butler; Gender Role*

### INTRODUCTION

Literature and language are expressive, with the intention of conveying something, trying to convince, influence, and change the minds of the readers. Wellek and Warren in their book entitled *Theory of Literature* (1990:

14-15) state that literature is an imaginative work that has various forms and is always changing. There are various things that can be expressed through literature and language, such as messages, information, stories, testimonies, and so on. One issue that is often raised in the literature is about feminism and gender issues which in

human social life often become a topic that is widely discussed. Within the scope of this feminist issue, gender stereotypes are things that often become the root of conversations that often lead to debates.

Many activism and activists often raise this issue and not a few of them also have backgrounds in the world of literature who then put their thoughts on this issue into works. The arts then become a medium for conveying messages about feminism and gender stereotypes, especially about women and their struggles in social life. The majority of people naturally display gender-specific behavior. The word "gender" itself refers to how men and women behave differently depending on their sex. Sex and gender are two distinct concepts that are related. While gender is a social construct, the term "sex" refers to biological occurrences. Male bodies are connected with being masculine, while female bodies are associated with being feminine, according to Butler (1999). Human identity is represented in one's outward appearance, inner characteristics, social roles, and behavior.

Gender stereotypes are preconceived notions about how men and women behave and look (Martin & Dinella, 2001). Men and women may find it difficult to define their identity because of gender stereotypes. Additionally, gender stereotypes can restrict chances in life for both men and women in general since they lead to cultural restrictions on personality traits and actions. People should be afforded the same chances and rights in all facets of social life so that gender is not a factor in any discrimination. Thus, it may be said that the central concern of feminism is gender.

Due to the reason that people must adhere to specific standards in order to be accepted by society, these aspects may appear differently from one another. The way people are required to act, dress, speak, and behave themselves in society according to their assigned sex is known as gender roles. Without taking into account the possibility that certain people can accomplish and accept what is right for them, they are frequently overgeneralized by society. Both genders may experience stereotype beliefs as a result of this form.

As a reflection of reality, film simply transfers reality to the screen without changing that reality. Meanwhile, as a representation of reality, film shapes and re-presents reality based on the codes, conventions and ideology of culture. Film is a useful medium for describing social life in society. The film displays a story that contains certain messages and values that are shown to the people who watch it. Audiences can be influenced by messages in films, cognitively, and effectively. One of the social issues that is often raised in films, whether as independent works or adaptations of other forms of literary art, is the issue of feminism and the spirit of the movement, along with the ideas to be conveyed about the importance of this movement.

Feminist-themed movies, such as the well-known *Enola Holmes 2*, which portrays a woman as the lead role, were released during this extraordinary era. This type of movie benefits all women everywhere and, most importantly, encourage them to be brave and to provide something meaningful in every way. Instilling moral

principles in every woman is another important goal of feminist cinema. By doing this, women prove to males that they are not to be undervalued and put in considerable effort to improve society. Since R.A. Kartini was the first woman to list all women with basic abilities like writing, reading, mathematics, and more talents, the idea that women should be at the forefront of society has been taught in Indonesia.

Films that raise the issue of feminism have been produced a lot in this century. The issue of feminism raised came from various waves of feminism that have existed. *Enola Holmes 2* has become a very popular feminist film since its release in 2022. *Enola Holmes* is a mystery film directed by Harry Bradbeer and distributed by Netflix in 2022, following on from the first film of the same name. *Enola Holmes 2* is played by Millie Bobby Brown as a young girl who is interested in detective activities. Unlike the first film which was adapted from the first novel in the series *The Enola Holmes Mysteries* by Nancy Springer, in this second film Harry Bradbeer tells the real life of the action of the matchgirls strike in 1888. Although different, *Enola Holmes 2* still tells the action of feminism in the feel of the Victorian era. In this sequel, *Enola Holmes* presents more female characters and social issues.

Feminism is general can be defined as a movement with purpose to is to establish a universal status for patriarchy in order to strengthen the appearance of feminism's own claims to be representative, which has occasionally motivated the shortcut to a categorical or fictive universality of the structure of domination, held to produce women's inequality experience in general (Butler 1999). Moreover, another definition explained that feminism was a movement in the beginning of human civilization when women were given secondary status by masculine-dominated social discourse and western philosophical tradition (Raina 2020). Based on the explanation above, it can be concluded that feminism is a movement by women in the beginning of human civilization to strengthen women's power in society.

Feminism is also represented in *Enola Holmes 2*(2022), as the first wave of feminism in the 18th century. In the Victorian era which has been the time background of *Enola Holmes 2*(2022), the problem that faced women in the Victorian era is gender stereotypes which created inequality between men and women in society. From a legal point of view, women are seen as incompetent and irresponsible. Also, a married woman was entitled to no legal recourse in any matter. They had no right to sue for divorce or to take custody of children when the couple separated. In the Victorian era also segmenting the role of men and women was called the concept of separate spheres. men and women started. These spheres were the public for men and the private or home for women. The woman had her area of expertise which was the home where she was the mother, the homemaker and a devoted domestic. This philosophy of the separation of spheres for men and women was determined by gender. Men were competitive, assertive and materialistic while women were pious, pure, gentle and sacrificing (Nsai Dzedze 2017).

Furthermore, in the Victorian era people were believed to be inferior to men, so society has been subjected to

men's authority in a lot of ways. For example, in the aspect of morality, in the Victorian era the society had zero tolerance for promiscuity and lawlessness. Victorian men, especially noblemen, are attending the best school and groomed for various professions. Meanwhile, Victorian women mostly have their education at home and have tiny freedom to do their activity in public. This also implies their right and opportunity in politics. The struggle of the restriction for women in public to vote or voiced their own opinion also became one of the background women start the feminist movement in the Victorian era (Nafis, 2021).

Beside the time background of *Enola Holmes 2* (2022) in Victorian era, another attractive point in this film is the story of Sarah Chapman and matchstick female worker in this film which portrayed a strong moral value about the struggle of feminism in Victorian era. The case of Sarah Chapman and matchstick female worker was based on the real story of The Matchgirls Strike of 1888. Sarah Dearman or known as Sarah Chapman was one of the organizers of the 1888 strike which included 1,400 factory girls who walked out from their factory due to inequality and discrimination. The matchstick factory was formed in 1844 by William Bryant and Francis May. The management is actually aware about the phossy jaw as a form of bone cancer as the side effect of dangerous raw material which is used for the matchstick. If a worker complained of having a toothache, they were told to have the teeth removed immediately or be sacked. The white phosphorus that they used to make the matches caused yellowing of the skin, hair loss and phossy jaw, caused by inhalation of phosphorus vapor. The whole side of the face turned green and then black, discharging pus. Sarah Chapman who knew this condition started initially the strike to bring up change for matchmakers. This strike has brought positive influence for the matchstick factory that in 1901 announced to stop using the dangerous phosphorus (Brisland 2020).

The film *Enola Holmes 2* is very interesting for further research because of the social issues and feminism raised in this film. The film *Enola Holmes 2* contains feminist values raised from social issues in the Victorian era, so it is very interesting to study. The Victorian era itself began in 1837, which means that a wave of feminism had emerged and developed in the time setting of this film. The problem in this research is to see how do gender stereotypes towards women depicted in *Enola Holmes 2* (2022), and how do the women in *Enola Holmes 2* (2022) response to gender stereotypes. The purpose of this study is to describe feminism and the stereotypes in the film *Enola Holmes 2*.

## METHOD

The study will analyze how the stereotypes towards women depicted in *Enola Holmes 2* (2022) and showing the women characters in *Enola Holmes 2* (2022) breaking the gender stereotypes. The study explains the meaning of gender stereotypes and its examples through the movie *Enola Holmes 2* (2022) to readers because this topic is frequently discussed and is also useful for educating many

people. Other than that, the study is about the big difference between the two genders in an era that creates inequality because of different gender.

By those purposes, feminism act is existed in order to fight against political and social inequalities. With so many movies having independent female main characters, the researcher also wants to know how the portrayal of women fighting for in the real world is. The women characters in the movie *Enola Holmes 2* (2022) have a few female characters who is smart, good at fighting with a high fighting spirit to uncover the truth. However, in that era, women could only live in a world led by men, so that their intelligence and skills were not needed and underestimated. Furthermore, the result of this study could not be generalized since it might consist different context from other topics.

With *Enola Holmes 2* (2022) used as an object of the study, the researcher will use the Feminist approach as the theoretical framework using The Gender and Feminism Theory by Judith (1999) which explained gender stereotyping in society creates gender inequality between women and men. This is called a gender hierarchy where men are seen as superior individuals compared to women which accused discrimination on women due to norm, society perspective, and many limitations. Moreover, Judith (1999) explained that society creates ties between the ideas of sex and gender by establishing standards that people had to adhere the succeed. People's gender in society is only a performance done to meet societal expectations and not a true manifestation of their gender identity.

This study uses *Enola Holmes 2* (2022) as the primary data source for the research. The data are in the form of screenshots of the movie *Enola Holmes 2* (2022). The data will be collected in form of dialogues and subtitles. Then, the collected data will be analyzed with selected theories. This process is needed to gain validate information taken from *Enola Holmes 2* (2022) movie to avoid misconceptions during the study. Then, the researcher do several steps to process the data analysis: (1) Data examination to reduce any unrequired data to make it relevant; (2) Divides the data according to the research question: the depiction of superstition and the impact of superstition; (3) analyze the data that has been classified based on the chosen theory; (4) Draw the conclusion based on the analysis.

## RESULT AND DISCUSSION

In this chapter, the researcher will present the data findings and conduct analysis about gender stereotypes in *Enola Holmes 2* (2022) and how the female characters in *Enola Holmes 2* (2022) fight against the stereotypes. To support the analysis, the researcher will use The Gender

and Feminism Theory by Judith (1999) which explained about gender performativity and gender roles in society to explained on how the English society in *Enola Holmes 2* (2022) viewed the gender stereotype between women and men, especially women who had many limitations at that period. *Enola Holmes 2* (2022) is a film released on Netflix as a sequel to *Enola Holmes* (2020) which tells the story of Enola Holmes's journey to find her mother but ends up getting involved in Tewkesbury's family case. *Enola Holmes 2* (2022) tells the continuation of Enola Holmes' story after successfully solving Tewkesbury's family case and being proud to open an independent detective agency on her own. This film tells the story of Enola Holmes' struggle to solve another case that is more complicated and dangerous than the previous one.

### 1. Gender Stereotypes Depicted in *Enola Holmes 2* (2022)

Gender can be defined as a signification sexually differentiated body assumes, but even that signification exists only in relation to another, opposing signification. In the feminist theory, gender is a relation, indeed a set of relation not only individual attributes. In the concept of feminism seeing gender as a mark when a woman as a term of their sex meanwhile men seeing as beyond the sex itself in universal personhood (Butler, 1999). Moreover, Butler (1999) argues that gender defined the distinction between men and women is based on social factors such as social roles, position, behavior, and identity.

#### 1.1 Women as Weak Human Being

In the opening scene Enola Holmes is explaining her goal in the future to become equal with her brother by creating a successful career as detective like a well-respected Victorian detective in the past and Enola becoming the first successful woman detective which has never happened before. This scene is depicted of gender stereotype in *Enola Holmes 2* when a women seen as a weak human being who have no right to create their own career with the evidence below:



**Figure 1** Opening Scene When Enola being Chased by The Police (01:15-01:25)

"My name is Enola Holmes"  
"You may remember me"  
"After solving my first case, I started a business"  
"A detective agency"  
"I was going to join the pantheon of great Victorian detectives"

"Detective Field"  
"Mackenzie Macintosh"  
"Sir Alfred Hornblower"  
"And the infamous Reginald Swain"  
"And best of all, I would be joining my brother"  
"I would be his equal"  
"A detective in my own right, worthy of the Holmes name"

In the opening scene of *Enola Holmes 2*, Enola as a main female character is starting the monologue while trying to escape from the police which explains her experience in *Enola Holmes 2020* who succeeded in solving Tewkesbury's case and opened her detective agency. This business is her decision to prove her ability as a smart and critical detective like other previous well-known Victorian detectives such as Detective Field, Mackenzie Macintosh, Sir Alfred Hornblower, Reginald Swain, and his brother Sherlock Holmes. The gender stereotype depicted in this scene is the career of Victorian detectives in the past, where all of them is men, which shows that society considers men smart, skilled, and have the power to build their own careers until they become well-respected detectives, and one of them is Enola's brother, Sherlock Holmes.

Based on the theory of gender performativity by Butler (1999) explained that the ideas of sex and gender in society have created a standard that drives gender as socially constructed. This is explained on how the gender stereotype in society can be seen as gender performativity which talks about how gender identity is formed through a set of acts. Moreover, women were actually discredited to performing social roles in the public or private sector, which would have enhanced their economic condition (Raina, 2020). The idea of how society sees women as weak human beings with no power, a person in charge of domestic work. Meanwhile, the perspective of men is associated with being reliable, smart, or strong, which is completely opposite from that of women. This perspective of women consistently creates a gender stereotyping that women are weak and being underestimated for their skills. This limits women's ability to do their own activities, such as freedom of career, like the well-respected detective in *Enola Holmes 2* which is dominated by men. Meanwhile, as a young lady, Enola found it difficult to get recognition from society due to her gender as a woman who was seen as a weak human being with no power, a lot of restrictions, and received a lot of sentiment from various parties. This condition makes it difficult for women to have a career as successful as men.

#### 1.2 Women as Feminine Figure

In the opening scene Enola Holmes is depicted as opening her agency but nobody wants to be her client due to the image of women as a weak and unskilled person. The majority of the potential clients that underestimate Enola's abilities as detective depicted the gender stereotype in the society when people tried to section jobs based on their perception of a gender. This opening scene depicted a gender stereotype in *Enola Holmes 2* when people have a strong perception of women as feminine figures with the evidence below as follows:



**Figure 2** Potential Clients Underestimate Enola Skill as Detective (02:09 – 03:00)

Client: "Am I addressing the secretary?"

Client: "Stone the crows, you're young

Client: "But you're a girl"

Enola: "Yes, I am. Um..."

Client: "What experience have you had"

Enola: "The Tewkesbury case?"

Client: "Sherlock Holmes, wasn't it?"

Enola: "I assure you it was mine"

Client: "Good man, that Tewkesbury. Brave lad"

Client: "Tell me... might your brother be free"

In this situation, Enola is talking to potential clients who were shocked by the fact that the detective was a young woman. A client questioned whether Enola is a secretary, others were confused that the detective is a girl, and others lowered Enola's abilities by the fact that she is a woman. But in the end, all of the potential clients asked whether her brother, the famous Sherlock Holmes, was able to investigate their cases. This is even worse when the potential clients are men. They looked down on the fact that Enola, as a detective, is a young girl and left aside the fact that Enola Holmes was the one who solved Tewkesbury's case.

This scene illustrated the idea of women as feminine figures who are responsible for domestic work and not becoming detectives, of which the majority are male detectives. Femininity can be explained as a cultural construct that is related to gender. The masculinity construct is traditionally linked to men and associated with an image of carrying out work, being a leader, independent, or strong. On the contrary, femininity is traditionally associated with women who have an image of attending to others' well-being, doing domestic work, weak, or sensitive which then forms gender roles in society (Moreno-Bella et al., 2019). This also in line with the result of the study by Azis & Sunra (2022) that explained gender stereotype that is depicted in Enola Holmes is domestic and submissive. The idea of masculinity and femininity drives the gender stereotyping by society that this profession should be done by men or this work should be done by women.

Furthermore, Butler (1999) also explained that the stereotyping has created the notions of masculinity and femininity. The gender performativity that creates a gender role in society, which sees a gender through a set of work, makes people differentiate behavior, profession, or work into masculinity or femininity. This idea of

masculinity and femininity makes the client's assumption that Tewkesbury's case is solved by Holmes as Sherlock Holmes, not Enola Holmes. Moreover, the praise given to young Tewkesbury as a brave man who had the courage to solve his family's cases is representative of the idea of masculinity in society, which creates the stereotyping of men as more skilled at activities or occupations that require a lot of energy. This also shows that society still strongly holds the opinion that women are feminine figures who are responsible for working in the administration duties rather than in the outdoor duties such as detectives which requires extra physical effort.

### 1.3 Women as Submissive Human Being

The scene on *Enola Holmes 2* has several depictions regarding women's position in society who are lower than a man. These depictions in *Enola Holmes 2* shows the gender stereotype of a women who seen as submissive human being with the evidence below as follows:



**Figure 3** Mira Troy Tried to Give Suggestion to Lord McIntyre (15:08 – 15:27)

Mira Troy : "But, sir, perhaps, if we were to consider whether this theft is connected. I have ideas..."

Lord McIntyre : "Did I ask for your advice? Or did I simply tell you to get it done?"

The first evidence can be seen from this scene when Enola is trying to sneak into the supervisor's office to look for traces of Sarah Chapman and overhears the conversation between Lord McIntyre and his secretary, Mira Troy. The stereotyping is carried out by the boss, Lord McIntyre, to his secretary, who has a lower position. Lord McIntyre seems to ignore Mira Troy's initiative to voice her opinion as a solution for the problem that Lord McIntyre is facing. However, Lord McIntyre finds ways to shut down Mira Troy's opinion and thinks that women's voices and opinions are not worth listening to. This scene is expressing the gender stereotype of women in society who have no power, and even their opinions are not even taken into consideration. This also shows patriarchy in society, which is a gender asymmetry and gender hierarchy in society.

The second evidence that depicted gender stereotypes in *Enola Holmes 2* when women were seen as submissive human beings can be seen from the dialogue of the performance manager in the theatre where Sarah Chapman and Mae used to perform. Enola follows Mae to a performance venue and finally reaches backstage. After a



short fight with Mae, Enola interviewed the performance manager who knew little about Sarah Chapman. The detail of performance manager dialogue is as follows:



**Figure 4** The Performance Manager Look Down Women in Society As A Toy To Played For Nobleman (21:00 – 21:23)

*Manager: "You see, they all think there's hope. That love is coming their way. But it never is. Blokes like that, they want cheap, but they marry dear."*

In this scene when the performance manager as an informant shared information about Sarah Chapman, who worked as a dancer in the theater. The performance manager said that pretty women like Sarah Chapman are beneficial for this theatre because her beauty would attract noblemen to visit and attend the theater. Moreover, as seen in the dialogue, the performance manager says a bad thing about Sarah Chapman, that the nobleman likes lowly women to have an unserious relationship, while for the serious one, the nobleman would prefer a noblewoman who has a similar social class. The manager, who knows that Sarah Chapman has a relationship with a nobleman, thought that the relationship between Sarah Chapman and the nobleman is not that serious, and judging Sarah who is ordinary as a cheap woman, a nobleman often marries women who also have the same social class which is called "dear". This also shows that women also have hierarchy and limitations. Women who have no social class or title have many injustices and are considered as subjects only for men's enjoyment. Moreover, the perspective of a performance manager shows the objectification of women in society. The dialogue shows that women are considered inferior and only used as objects of exploitation by men, where women are only used as objects and play around with ordinary women as a toy before starting a commitment with noblewomen:



**Figure 5** The Conversation of Mira Troy and Enola About Limited Freedom of Women in Society (53:53– 50:51)

*Enola : "What are they doing with those fans?"*  
*Mira Troy : "Sending messages. Saying everything that is forbidden, or too embarrassing to say aloud."*

*Enola : "Thank you for the lesson."*  
*Mira Troy : "It's a lesson hard learned. Without power, we women must rely on our wits for our fortune, because our chances are short. Here. Take my fan. I have no use for it. And if you*

*wish to speak to William, you could always try with that.*

In this scene, Enola was watching William Lyon on the dance floor from above while watching the group of noblewomen who seemed to be communicating with the fan in their hands. This confuses Enola, who wonders if there is some hidden code they are talking about with the fan. Mira Troy, who approached Enola and got to know each other with Enola's false identity, then asked Mira Troy about the use of the fan in the noble hands. Then, Mira Troy explained that the fan is used to communicating with noblemen and that they are interested in sending messages. From the dialogue above, it is clear that women have limited access to get what they want. The norm and perspective in society stereotyping women as those who only handle domestic work often get discrimination when they do activities or behavior that are out of the norm or other existing rules.

The fourth evidence that depicted gender stereotypes in *Enola Holmes 2* when women were seen as a submissive human being can be seen from the dialogue between Lord McIntyre and Mira Troy. In this scene Mira Troy reveals who she really was. The suppressed emotions due to pressure when she was working under Lord McIntyre made Mira Troy also commit crimes by stealing money under the reason of discrimination that she has received this far with dialogue below:



**Figure 6** The Anger of Mira Troy Regarding Inequality Between Men and Women in Society (01:50:05 - 01:51:05)

*Lord McIntyre: "How dare you take advantage of your position!"*

*Mira Troy: "I take advantage? What were my advantages? Treated like a common servant when I have twice the mind of yours. Any of yours. Why shouldn't I have a share of your ill-begotten riches and punish you at the same time? Why shouldn't I be rewarded for what I can do? Where is my place in this... society? I am a woman. I cannot join clubs, I cannot own shares, I cannot advance myself as they can. So... I found my own way. And it was fun."*

This dialogue above expressed the anger in Mira Troy as a woman who feels oppressed and has many limitations in society. The corruption that Mira Troy committed was done as an action to speak up about the discrimination that she felt when she worked under Lord McIntyre, who was also corrupt. Mira Troy is angry and feels unfair because she is treated like an ordinary servant, even though she is smarter than Lord McIntyre. She also felt unfair about how society treats women with various limitations and makes them shut down women's rights. Women cannot have their own right to do various activities like men, as can be seen in the dialogue above. This condition made Mira Troy question herself as a woman about her position in society because it seems society has shut down the position of

women in society, so they have no freedom to pursue their own interests or activities as freely as men in society.

Based on the evidence above that depicts a gender stereotype in *Enola Holmes 2* (2022), women were seen as submissive human beings by a society that is weak, has no power, and has no right in their own lives. Submissive in general can be explained by the body posture that the majority showed by women, which then became the gender stereotype in society associating with the image of women who have low power over others and themselves, which makes women considered to be less competent, unskilled, and have no control in any situation compared to men (Ellemers, 2018). The submissive images also correlated with the idea of femininity in society, which defines a woman as caring, emphatic, passive, and submissive (Hussain et al., 2015). The underestimate that Mira Troy gets from her boss, a performance manager who has a degrading perception of women's position in society, and how noblewomen act in implicit ways to send a message to a nobleman in a ball party illustrated that women face strong restrictions to get their rights due to the gender stereotype that society sees women as submissive human beings.

Furthermore, In the explanation of Judith (1999) about gender identity and gender performativity which explained that society creates gender stereotyping by associating gender with the roles and functions in society. In gender roles, women are portrayed as individuals who have less power and are associated as a person who is responsible to do domestic work rather than advance their career in work. This can be interpreted as meaning that the gender role limited or even shut down the women's right to freely express their feelings due to the negative perception of women who are considered to engage in impolite behavior. So many noblewomen expressed their feelings by communicating or even seducing the nobleman by moving their fan in front of their faces. Not only limited to the freedom of women to express their feelings, the idea of femininity as an attribute of women creates a gender identity through cultural context, which then develops into the perspective that women are a person with feminine images like being weak, no power, passive, and submissive. Women were actually discredited from performing social roles in the public or private sector, which would have enhanced their economic condition (Raina, 2020). Moreover, Pamungkas & Nugroho (2023) also explained that the gender stereotype depicted in *Enola Holmes 2* is the idea of women as weak and submissive human beings who cannot fight back when they are threatened. According to the explanation of the evidences and related theory, it can be concluded that the limitations and underestimates of a woman from society, as depicted in *Enola Holmes 2* is showing how women are seen as submissive human beings from the scene of Mira Troy and Lord McIntyre in Lyon Matchstick Factory, from the performance manager who underestimates the position of women in society, the limited action of women from the conversation of Mira Troy and Enola, and the explosion of Mira Troy's anger about the limited right of women in society which unequal with women even when women have more skill and ability than men.

#### 1.4 Women Seen as Emotional Human Being

Lastly, gender stereotype that depicted in *Enola Holmes 2* is women seen as an emotional human being. This depiction is in the scene of when Sherlock Holmes argued with Enola Holmes after finding out that Enola became a suspect in Mae's murderer case. Sherlock that was angry blames Enola for unable to control her emotions and makes her trapped in a complicated situation with the dialogue below:



**Figure 7** Sherlock and Enola Arguing On How Enola Emotion Trapped Her to Dangerous Situation (44:15 – 44:18)

*Sherlock Holmes: "Someone is already dead, and you are now a suspect in a murder case. You've let your emotions get the better of you. Stay here. Don't leave. I will look into this."*

In this scene, after finding out that Enola Holmes is being suspected of Mae's murderer case from Inspector Lestrade, Sherlock Holmes immediately confronts Enola Holmes about her activity being dangerous because Enola let her emotions take over her control. The gender stereotype in this scene is when Sherlock Holmes says that Enola, as an emotional detective who is unable to control her emotions, so it covers her critical abilities. This judgement comes from Sherlock's opinions of women as emotional and empathic people who are unable to control their emotions compared to men who are able to think calmly and realistically.

Based on the evidence above, it can be known that Sherlock Holmes has a stereotypical view of woman as emotional human beings. This is related to the femininity traditionally associated with women that has an image of attending to others' well-being, doing domestic work, being weak or sensitive, which then forms gender roles in society (Moreno-Bella et al., 2019). The explanation of Butler (1999) stated that gender stereotyping in society is based on gender performativity, which correlates with how a certain gender should act. The image of women as emphatic and full of emotion as an influence of traditional femininity is a form of gender stereotyping, which is depicted in *Enola Holmes 2* (2022) when Enola and Sherlock arguing how Enola emotions leave her trapped in a dangerous situation.

## 2. Female Characters in *Enola Holmes 2* (2022) Breaking Gender Stereotypes

*Enola Holmes 2* (2022) shows that the female character fights against gender stereotypes as a form of feminism. Feminism is the movement to established a universal status for patriarchy in order to strengthen the appearance of feminism's own claim to be representative has

occasionally motivation the shortcut to a categorical or fictive universality of the structure of domination, held to product women's common subjugated experience (Butler, 1999). Moreover, Butler (1999) explained that the urgency of feminism is to established a universal status for patriarchy in order to strengthen the appearance of feminism's own claims to be representative has occasionally motivated the shortcut to a categorical or fictive universality of the structure of domination, held to produce women's inequality experience in general. There are several scenes which showed in *Enola Holmes 2* (2022) the women's struggle to breaking the gender stereotypes. Therefore, the analysis on how the female character in *Enola Holmes 2* (2022) breaking the gender stereotype as follows:

## 2.1 Becoming Equal

The first action that depicted Enola Holmes when the female character tried to break the gender stereotype is in the opening scene. Enola, who understands that there are many limitations of women in society, tried to become a detective as an action to break the gender stereotype of a woman who is seen as weak and unskilled so she can have an equal position in society. The evidence of Enola breaking the gender stereotype is as follows:



**Figure 8** *Enola Holmes Opening Detective Agency to Be Equal With Her Brother* (01:44 – 01:55)

*"And best of all, I would be joining my brother."*

*"I would be his equal"*

*"A detective in my own right, worthy of the Holmes name"*

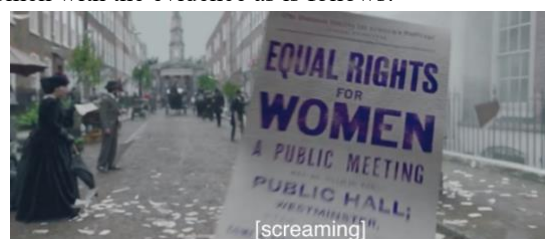
From this dialogue, it can be known that the goals and motivation of Enola Holmes opening up her independent detective agency are to equalize her position between her and her brother Sherlock Holmes, Mycroft Holmes, or other famous detective figures who already have good images in society.

The theory of gender performativity by Butler (1999) explained about the gender role that women are portrayed as individuals who have less power and are associated as a person who is responsible to do domestic work rather than advance their career in work. This perception of gender role in society developed into gender stereotyping, which regulated and associated a gender with certain images. This is what hampers a woman from carrying out the same activities as men, such as working in the same sector or having the same freedom to do an activity that they like. This is in line with the explanation from OHCHR (2014), which stated that a stereotype in society is very harmful

and limits women's capacity to develop certain abilities, pursue their professional careers, and make choices about their lives and life plans. Gender stereotypes are also wrongful actions that cause human rights violations and create injustice for society. In the opening scene of *Enola Holmes 2* when Enola explains her dreams of being equal to her brother, Enola knows that women need extra effort to break down the limitations to equalize their position in society, which requires quite a long time to achieve. In addition, *Enola Holmes* depicts liberal feminism, where gender discrimination happens by treating women unfairly (Azis & Sunra, 2022). Based on this explanation, it can be concluded that Enola's effort to open up an independent detective agency is a form of breaking gender stereotyping and to prove to society that it is not the right thing to do.

## 2.2 Starting Feminism Movement

Eudoria Holmes who tries to attract public attention by placing explosive in mailbox to distribute the flyers which containing messages of public meeting of equal right for women with the evidence as is follows:



**Figure 9** *Eudoria Spreading Information About Feminist Movement* (03:16 – 03:27)

*"My mother, meanwhile, is still on the run."*

*"And trying not to draw"*

Eudoria Holmes, known as Enola's mother, is one of the women who actively voiced the inequality that was facing women in society. Eudoria Holmes knows that her action to voice opinions about gender stereotyping in society has limited women's activities to pursue their lives and their dreams. The opinion that women are weak and have no power is very strong in society, which causes women to be unable to get their freedom and often told to do domestic work such as cooking, taking care of the children, stitching, or to the point of not being allowed to receive formal education. Meanwhile, Eudoria Holmes acts otherwise. She taught Enola and her brother things that are not learned in formal education, such as science and critical thinking. Moreover, rather than focusing on teaching Enola about noble etiquette, Eudoria gives Enola the freedom to learn whatever she likes and express her feelings. This is also one of Eudoria's actions to fight against gender stereotyping in society, with the hope that in the future Enola grows to become an independent, strong, and smart woman. The agenda of exploding the mailbox to share the women's rights flier is one of her women's group's agendas to voice out that women are also humans with the same position as men, who have a right



to do various activities not only limited to domestic work as their responsibility.

The action that has been carried out by Eudoria can be categorized as a feminist movement. Butler (1999) explained that the urgency of feminism is to establish a universal status for patriarchy in order to strengthen the appearance of feminism's own claims to be representative, which has occasionally motivated the shortcut to a categorical or fictive universality of the structure of domination, held to produce women's inequality experience in general. This explanation can be interpreted as saying that the feminism movement in society is an action to breaking the limitation and norm of the domination of patriarchy, which sees women as having no power, so that they tend to have an inequality of human rights. Feminism can also be explained as a movement in the beginning of human civilization when women were given secondary status by masculine-dominated social discourse and western philosophical tradition (Raina, 2020). Based on the study by Rahmayanti (2022), feminism in the film *Enola Holmes 2* is the first wave of feminism when viewed from a time setting, namely the 18th century. The issues raised in this film also represent social issues in 1888. Discrimination in this film is shown through norms and culture adapted to the time setting. The feminist movement that was carried out by Eudoria through spreading flyers about women's human rights is an action to break the gender stereotype in society and achieve an equality of social and moral right for women.

### 2.3 Fighting Together

In *Enola Holmes 2*, this action of breaking gender stereotypes is depicted when Eudoria and Edith try to take Enola to the prison and run away from the police. After breaking into the prison walls with a bomb, they tried to run away from the police with a horse cart and also fought against Superintendent Grail and his subordinate. Eudoria Holmes as Enola's mother started to question her daughter's condition and felt that all of her children were too independent and lonely. Eudoria also gave an advice to Enola regarding her action to prove her worth and abilities in society with the evidence below:



**Figure 10** Eudoria Suggestion for Enola To Find Her Ally In Her Action To Break Gender Stereotype (01:18:45 – 01:19:37)

Eudoria : "You know, I sometimes think I brought you up to be too independent."

Enola : "Mother?"

Eudoria : "I did. You, Sherlock, Mycroft. Strong, formidable, individual children, but, well, perhaps a little lonely. You will do very well on your own, Enola. But with others, you

*could be magnificent. Who do you think organized all of this after all? Hm. No, you find your allies. Work with them, and you will become more of who you are. You speak with one voice, and you will make more noise than you could ever have imagined."*

When Eudoria heard from Sherlock that Enola was innocent but sentenced to death for Mae's murder case, she began to plan the runaway of Enola to escape from prison with her assistant Edith. During the runaway, Eudoria starts to discuss the case of Sarah Chapman with Enola. Moreover, seeing Enola's struggle alone in solving this case, she gives her daughter the advice that Enola needs support from another person who has the same vision as her so her effort and action can be seen and voiced much louder. This is also in line with how Eudoria fights against gender stereotypes and gender inequality in society by gathering women with the same vision as her in order to help her easier, sending the message that men and women have the same rights in society, which has been limiting women's freedom to do activities that they want. Eudoria, who also fought against gender stereotypes a long time ago, definitely understands that this is not easy to do. Society, which holds the idea that women are weak and have no power, finds it very difficult to change and become aware of this phenomenon. So therefore, Enola, who wants to prove herself worthy and has the same ability as her brother, needs a companion to support her work so she is recognized by society as a trusted detective.

The theory of gender performativity by Butler (1999) explained that stereotyping has created the notions of masculinity and femininity. The gender performativity that creates a gender role in society, which sees a gender through a set of work, makes people differentiate behaviour, profession, or work into masculinity or femininity. This explanation can be interpreted as saying that society has associated gender with certain behaviors that create gender stereotypes. Women have a stereotype as an image of being weak, no power, and emotional, which limits their own rights in their own lives. This situation was created by patriarchal society, which is dominated by men, and the belief that men have natural superiority. Not only Enola feels the underestimation from society on how her gender limits her career growth as a well-respected detective. In addition, the ally who supports Enola's struggle as an action to break the gender stereotype is categorized as female bonding, which has been used as a feminist strategy. Female bonding is a powerful instrument in the fight against gender violence, such as gender stereotypes and gender inequality (Narbona-Carrió, 2012). So, based on this evidence, the strategy of women against gender stereotypes is to work together with women who also feel the same, feel the same discrimination experience with the same vision to remove gender inequality.

## 2.4 Rebellion as Real Action

The depictions in *Enola Holmes 2* that the majority of society underestimate women's ability and create many limitations of women's life drive female characters in *Enola Holmes 2* to do a rebellion as a real action to break the gender stereotypes. The first evidence of rebellion as an action to break gender stereotypes is the revenge of Mira Troy. In the scene when Enola, Sherlock, Sarah, and Mr. Tewkesbury are fight against Superintendent Grail and his subordinate in theater which seized the evidence of corruption by Lyon Matchstick Factory who killed a lot of female workers due to phosphorus as contamination as toxic liquid but claimed as died of typhus. Sherlock who tried to analyzed the corruptor from codes and evidences that he obtained before figured out that it was Mira Troy action with dialogue bellow:



**Figure 11** Mira Troy's Revenge as A Rebellion To Break Gender Stereotype (01:47:37 – 01:48:38)

Sherlock : "But you are mistaken. I summoned you here to draw that very person out. The accounting was masterful. A tangle of roots, but all pointed to one pocket. One person receiving the fruits of their schemes with no one noticing. "

Enola : "Hearing everything, seeing everything. Ignored for years. "

Sherlock : "Playing them all. "

Enola: "It's all a game. Miss Mira Troy. "

Lord McIntyre : "Absurd. Oh, I don't believe it. "

Mira Troy : "It's remarkable what can be done when people underestimate you. "

From the movies and the dialogue above it can be known that as a woman who works under a dictator boss yet also playing dirty with money, Mira Troy feels the discrimination is huge. The dirty agreement made by Lord McIntyre with businessmen or other noblemen but Mira Troy can only see it all in silence without being able to do anything. This condition drives Mira Troy to corrupt the money with a little game to remove the traces as well as play around with Lord McIntyre and other noblemen who underestimate her ability.

The second evidence of rebellion as an action to break the gender stereotypes in *Enola Holmes 2*(2022) is when Sarah Chapman, Enola, and Bessie try to voice out the fact about the Lyon matchstick factory which carries out dangerous work by using phosphorus, a toxic liquid as a material for matchstick. The death of many female workers in the factory which is claimed by the factory as typhus cases shows that the factory does not care about the welfare of female workers and only focused on increasing

the factory's profit. Sarah Chapman tries to voice this fact to persuade other female workers to doing a revolt as an action and proof that women has power to stand up for their right with the dialogue below:



**Figure 12** The Speech of Sarah Chapman In Front Of Female Workers To Call For A Strike (01:53:43 - 01:57:17)

Enola: "Let her speak"

Sarah: "A few weeks ago, Mae Izley, William Lyon, and I set out to prove something. To prove that this factory was killing people, and they knew it. But they decided that profit mattered more than we did. It ain't typhus that's killing us. It's the phosphorus. What we work with every day. These were our friends... and our children. It's time for us to use the only thing we have. Ourselves. It's time for us to refuse to work.

Enola: "No. This can't be their future. "

Sarah: "I'm sorry, Enola. "

Enola: start to stomping her feet

Sarah: "Be one voice. Come on, girls"

*Enola Holmes 2* that tells how women stand up to get their rights in society who support gender equality also tells the story of the Sarah Chapman character which is based on real events in the past as women who stand up and voice women's rights, especially the welfare of female workers.

Based on the dialogue above, Sarah Chapman finally has the courage to voice out about phosphorus as a toxic material that killed a lot of their work colleagues in a factory with the help of Enola and Bessie. Sarah explained the evil and dirty practices that were done by factories that put aside the welfare of female workers over profits for the company. In the beginning, other female workers look hesitant and ignore Sarah's invitation to refuse work as an action to voice the condition of female workers in the Lyon matchstick factory and the lack of welfare for female workers. However, when Enola starts stomping her feet as a symbol of uniting the voice and power of female workers. Other female workers start to follow Enola's actions by stomping their feet together and begin to leave the factory as an act of refusing to work. This scene shows how Sarah Chapman, Enola, and Bessie fight against gender stereotypes in the factory that think female workers have no power so they can be used by working in dangerous workplaces without considering the welfare of female workers. The action of refusing to work, started by Sarah Chapman and followed by other female workers represents how the female character fights against the discrimination created by gender stereotypes in Lyon matchstick factory. Based on the theory of gender

performativity by Judith (1999) explained that the gender of people in society is only a performance done to meet societal expectations and not a true manifestation of their gender identity. Moreover, women were actually discredited from performing social roles in the public or private sector, which would have enhanced their economic condition (Raina, 2020). This situation that leads to the limiting of gender roles is produced by individuals' performance based on the binary product. This can be seen as Mira Troy's effort against gender stereotypes that happen to her all the time. The corruption is a revenge of discrimination and mockery when she is working. Mira Troy, who also helped Lord McIntyre and the nobleman to succeed the agreement but didn't get the benefit of the corruption, feels inequality and discrimination as a woman who has no power takes the decision for revenge. In addition, this is also seen in how Sarah Chapman fights against the discrimination of female workers who work in dangerous and toxic environments only to provide higher profits for Lyon. This is in line with the study from Pamungkas & Nugroho (2023), which explained that *Enola Holmes 2* not only depicted feminism in terms of gender equality but also that fellow women must also support each other and help other women. Those two pieces of evidence show how Mira Troy and Sarah Chapman breaking gender stereotypes through rebellion. Mira Troy with corruption as revenge and playing around with people who underestimate her ability and Sarah Chapman with a call for strike with all female workers in Lyon Matchstick Factory. Here is another negative effect of superstition is that people will become oblivious about rationality and choose emotion over thinking when deciding on something.

## CLOSING

### Conclusion

Based on the results, it can be concluded that there are four gender stereotypes depicted in *Enola Holmes 2* that is women as weak human beings, women as feminine figures, women as submissive human beings, and women as emotional human beings. The gender stereotype of women as weak human beings is depicted in the opening of *Enola Holmes 2*, which shows Enola's dream to become a well-respected detective, which is hard for women due to the gender stereotype of women as weak human beings that are not suited to become detectives. The gender stereotype of women as feminine figures is depicted when Enola welcomes potential clients who underestimate her ability due to the gender stereotype of women as people who handle domestic work. The gender stereotype of women as submissive human beings is depicted in *Enola Holmes 2* (2022) through several scenes when Lord McIntyre ignores suggestions from Mira Troy, the performance manager who underestimates women's position in society, the limited freedom that women have

in society that shows in how noblewomen communicate with others in Ball Party, and the anger of Mira Troy about the condition of women in society who have no advantage in their lives. The gender stereotype of women as emotional human beings is depicted when Enola and Sherlock are arguing about how Enola let her emotions trap her in a dangerous situation.

This research also analyses how the female characters in *Enola Holmes 2* breaking the gender stereotype, which is depicted in several strategies, including becoming equal, starting the feminist movement, fighting together, and taking rebellion action. In action to break gender stereotypes by becoming equal in society, it is depicted in the opening scene when Enola opens her own detective agency to become equal with her brother and gain recognition from the public. In action to break gender stereotypes, as depicted in Eudoria's action, she exploded a mailbox to share flyers about equal rights for women in public places. In action to break gender stereotypes through fighting together, Eudoria gives Enola a suggestion about the importance of an ally to support her struggle to break gender stereotypes in society. In action to break gender stereotypes through rebellion, action is depicted in two scenes: first, the revenge of Mira Troy towards people who underestimate her skills by embezzling Lord McIntyre's money to several unknown back accounts. Second, Sarah Chapman gave a speech in front of female workers in Lyon Factory to persuade them to call for a strike to establish justice for female workers.

In conclusion, the gender stereotype in *Enola Holmes 2* is depicted in several types namely women as weak human beings, women as feminine figures, women as submissive human beings, and women as emotional human beings. Also, the female characters in *Enola Holmes 2* breaking the gender stereotype is depicted in several strategies, namely becoming equal, starting the feminist movement, fighting together, and taking rebellion action.

### Suggestions

The researcher, after conducting this study finds the results of the study hold a significant meaning for future researches and researchers. Especially in the domain of gender role and gender performativity in literature. The theory of gender role and gender performativity that is used in this research to analyze gender stereotypes in *Enola Holmes* can also be used in other literary works that tell about women's struggle for equality or gender discrimination in society. This theory that explains gender in society is associated with certain identities that create limits and are suited for those kinds of literary works. With those connections, future researcher can use the role of men on supporting gender stereotype. *Enola Holmes 2* which tells the story of female characters breaking the gender stereotype and achieving gender equality also depicted how male characters from noblemen or ordinary

men have their own stereotype towards women in particular. Moreover, the time setting of this movie is when the society is dominating by the patriarchy. Women are seeing as no power human being that have to obey on the order and power of man. Based on this situation, the researcher suggestion for future research to analysis on how the men as male character in *Enola Holmes 2* (2022) supporting the gender stereotype in society which limits women to have their own rights and freedom. Hence, this study have a possibility to be a great assistance in the future researcher.

## REFERENCES

- Anggraini, A., & Retnaningdya, P. (2022). Women's Rebellion to Find Voices in *Enola Holmes*. *Anaphora: Journal of Language, Literary, and Cultural Studies*, 5(1), 104–116. <https://doi.org/10.30996/anaphora.v5i1.6657>
- Azis, N. R., & Sunra, L. (2022). Gender Stereotype in *Enola Holmes*: A Film Analysis of The Main Character. *ELITERATE: Journal of English Linguistics and Literature Studies*, 2(3).
- Brannon, L. (2017). *Gender: Psychological Perspectives* (7th ed.). Routledge.
- Brisland, Martin. 2020. "Matchgirl Strikes: Women Unite And Fight." In Common. 2020. <https://www.in-common.co.uk/2020/08/13/match-girl-strikes/>.
- Butler, J. (1999). Gender Trouble: Feminism and the Subversion of Identity. In *Journal of Electroanalytical Chemistry* (Vol. 46, Issue 2). Routledge. [https://doi.org/10.1016/S0022-0728\(73\)80146-9](https://doi.org/10.1016/S0022-0728(73)80146-9)
- Ellemers, N. (2018). Gender Stereotypes. *Annual Review of Psychology*, 69, 275–298. <https://doi.org/10.1146/annurev-psych-122216-011719>
- Hussain, M., Naz, A., Khan, W., Daraz, U., & Khan, Q. (2015). Gender Stereotyping in Family: An Institutionalized and Normative Mechanism in Pakhtun Society of Pakistan. *SAGE Open*, 5(3). <https://doi.org/https://doi.org/10.1177/21582440155952>
- Kachel, S., Steffens, M. C., & Niedlich, C. (2016). Traditional masculinity and femininity: Validation of a new scale assessing gender roles. *Frontiers in Psychology*, 7(JUL), 1–19. <https://doi.org/10.3389/fpsyg.2016.00956>
- Kamil, A., & Rochmaniah, A. (2023). Representation Of Feminism In *Enola Holmes* Film 2 John Fiske's Semiotic Analysis [Representasi Feminisme Dalam Film *Enola Holmes 2* Analisis Semiotika John Fiske]. *Jurnal UMSIDA*, 1–11. <https://doi.org/https://doi.org/10.21070/ups.1802>
- Nafis, Silma Nadyan. 2021. "Feminist Movement in 1884 thin the British Empire in Harry Bradbeer's *Enola Holmes* (2020)." *Metaphor* 4 (1): 81–95.
- Nsaidzedze, Ignatius. 2017. "An Overview of Feminism in the Victorian Era [1832-1901]." *American Research Journal of English and Literature* 3 (1): 1–18. 10.21694/2378-9026.17012.
- Martin, C. ., & Dinella, L. (2001). Gender-related Development. In *International Encyclopedia of the Social & Behavioral Sciences* (pp. 6020–6027). Pergamon.
- Moreno-Bella, E., Willis, G. B., & Moya, M. (2019). Economic Inequality and Masculinity–Femininity: The Prevailing Perceived Traits in Higher Unequal Contexts Are Masculine. *Frontiers in Psychology*, 10(July), 1–9. <https://doi.org/10.3389/fpsyg.2019.01590>
- Narbona-Carrión, M. D. (2012). The Role of Female Bonding on the Stage of Violence. In *Performing Gender Violence*. Palgrave Macmillan New York.
- Nolen. (2020). *Performativity of Main Character in The Color Purple By Alice Walker: Feminist Approach* [Putra Batam University]. <http://repository.upbatam.ac.id/359/>
- Pamungkas, D. P., & Nugroho, A. (2023). An Analysis of the *Enola Holmes 2* Movie From A Perspective of Feminist Theory. *Jurnal Onoma: Pendidikan, Bahasa Dan Sastra*, 9(2), 1205–1211.
- Rahmayanti, S. (2021). Representasi Feminisme Dalam Film *Enola Holmes*. *Jurnal Ilmu Komunikasi*, 4(2). <https://doi.org/https://jkom.upnjatim.ac.id/index.php/jkom/article/view/152/78>
- Raina, J. A. (2020). Feminism : An Overview Feminism : An Overview. *International Journal of Research*, 04(13), 3372–3376. [https://www.researchgate.net/publication/339939198\\_Feminism\\_An\\_Overview](https://www.researchgate.net/publication/339939198_Feminism_An_Overview)
- OHCHR (UN High Commissioner for Human Rights). Gender stereotypes and Stereotyping and women's rights. United Nation. [https://www.ohchr.org/sites/default/files/Document s/Issues/Women/WRGS/One Pagers/Gender\\_stereotyping.pdf](https://www.ohchr.org/sites/default/files/Document s/Issues/Women/WRGS/One Pagers/Gender_stereotyping.pdf)
- Sarah, R. (2022). Representation of Feminism on the Character of *Enola Holmes* in the *Enola Holmes* Film: John Fiske's Semiotic Analysis. *Jurnal BAHAS*, 33(2). <https://doi.org/https://doi.org/10.24114/bhs.v33i2.3555>
- Wellek, R., & Warren, A. (1949). *Theory of Literature*. New York: Brace & CO.